

"Best of Jura Franco-Swiss"

The most beautiful cross-country ski trails in the Jura

Classic or skating style, in 8 days and 7 nights

Saison 2022



The Franco-Swiss Jura mountain range is certainly one of the largest networks of continuous, marked and traced cross-country ski trails in Central Europe and will be the backdrop for this superb holiday with 150 to 220 km in 6 stages (depending on the variant chosen).

Do you already know the principle of Sandoz Concept tours and do you like them? Then here is one that should also seduce you with the "Best of" of the Franco-Swiss Jura which will allow you to ski through territories as fascinating as they are varied. In one week, you will discover the most beautiful routes in the Jura mountains, criss-cross the Haut-Jura Regional Nature Park and make incursions into Swiss territory, all on perfectly marked and fully prepared slopes in both styles. Numerous glimpses and breathtaking panoramas will punctuate your days. Our base for this stay is located near the resort of Les Rousses, in Bois-d'Amont. This village truly "breathes" Nordic skiing and is famous for hosting many French cross-country and Nordic combined champions.

The week is not a competition but a discovery holiday that will take you through a superb winter landscape. It will follow in places the famous route of the Transjurassienne, passing through typical and magical villages and places with singing names such as Chapelle-des-bois, Bellecombe, the Chalet des Ministres and the Carrefour du Massacre, skiing at your own pace. Pleasure will take precedence over performance, discovering every day the nature and culture of the country!



Program Description:

Saturday: Travel and transfer

Individual journey to Bois D'Amont (Cure or Le Brassus train station 10-15 minutes away). Check-in of your rooms at the Hotel Club du Risoux. Welcome aperitif and first meeting on the week's activities followed by a meal together. Preparation of the skis for the next day. Well-deserved night.

Sunday: Day on the site of the Vattay, 25 to 35 km depending on the course.

The site of La Vattay located at 1260 meters of altitude is 25 minutes from our hotel which we will join with our minibuses. La Vattay's piste network offers pistes for all levels. Some of them, such as the "Noire de Divonne" or the "Sonnailley", give a superb view, while the "Louvatière", which is in the forest, is appreciated in snowy weather! Lunch break at the Nordic Centre before a second loop of your choice in the afternoon. Return at the end of the afternoon to the hotel for an ultimate sauna and swimming pool.

Monday: Day at the Lajoux site, approx. 25 to 35 km depending on the route

Breakfast then transfer by minibus to the departure of the GTJ in Lajoux. We will be immediately rewarded with magnificent views towards the place called "Les Trois Cheminées" on the high peaks of the Jura mountain range. A little extra on the "Simard" track before leaving for the lunch break at the "Collège", a superb gîte-restaurant located right on the edge of the slopes. Two alternatives are possible in the afternoon to reach Lajoux, either via the combe de Laisia or in direct line through Les Platières. A little extra without any other possible option in Lajoux for the more enduring before returning to our accommodation in Bois d'Amont for recovery and relaxation in the hotel's Spa with its heated swimming pool and sauna. Preparation of the skis for the next day's stage then evening meal and meeting and presentation of the next day.

Tuesday: Day in the Massacre forest, approx. 28 to 35 km depending on the itinerary

Copious breakfast then short transfer by minibus to the small village of Prémanon. Departure of this day in the direction of the combe Sambine via the Bois de Ban track then to the lunch break at the chalet de la Frasse. The afternoon's route will pass through century-old forests by the combe à la chèvre, the Tuffes track before returning to Prémanon. On the way back, visit the Fort des Rousses, which is none other than a former military fort now housing the maturing cellars of around 140,000 wheels of Comté cheese (allow 1h30 and warm clothes as it is cold!). Return at the end of the afternoon to the hotel where the heated swimming pool and the sauna await you. Lunch together followed by the presentation of the next day.



Wednesday: Day in the Risoux massif, 25 to 35 km depending on the route

This third day starts in front of our hotel and partly follows the route of the famous Transjurasienne (the only French event registered on the Worldloppet race circuit). There are several routes to choose from, either by leaving in the direction of the village of Les Rousses through a particularly pleasant peat bog landscape or in the direction of the village of Le Brassus on Swiss territory or directly starting with a long climb towards the Risoux forest up to the crossroads of the chalet des ministres in the middle of the forest, which practically corresponds to the summit of this imposing forest massif. Lunch break organised either at the Gaillard chalet or other possibility at the Lodge in Ponard above Les Rousses depending on the group. Superb tour in the state forests in the afternoon before returning to Bois d'Amont to our hotel. Heated swimming pool, hammam and sauna for resting then meal with local specialities in the evening.

Thursday: Day at the Col du Mollendruz - La Givrine site, 28 or 35 km depending on the route

Today's stage starts at the Col du Marchairuz in Switzerland which we will reach from our accommodation with a short transfer by minibus of about 20 minutes. Today's magnificent itinerary takes us over open ground, towards the Col de la Givrine before reaching the Vermeilley refreshment bar where we will have our traditional break in the early afternoon. Second part with the possibility of extras in the direction of the Givrine for the most enduring then return for 13 kilometers to the starting point and mini-transfer to finish the day to our hotel where the sauna awaits you and will be hot! Lunch together then presentation of the last outing.

Friday: Day on the site of Chapelle des bois, 25 to 30 km depending on the route

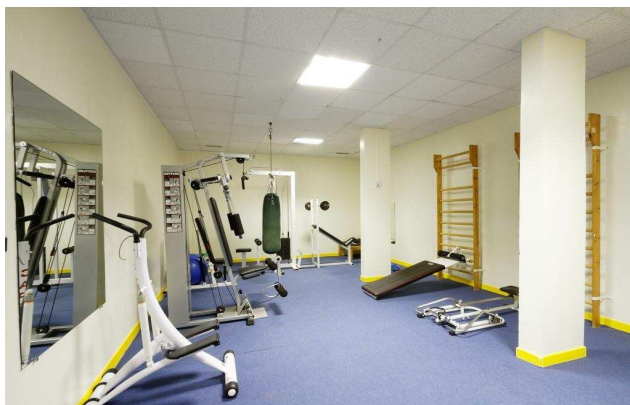
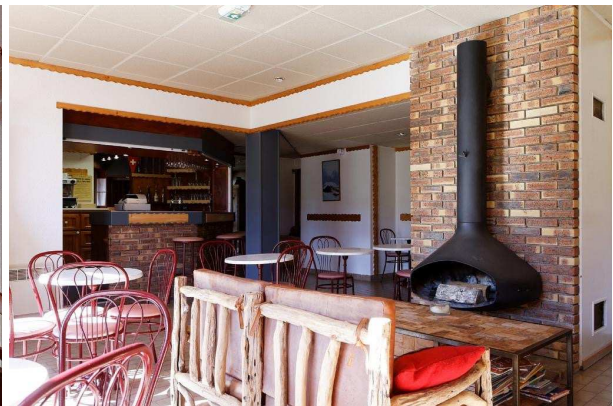
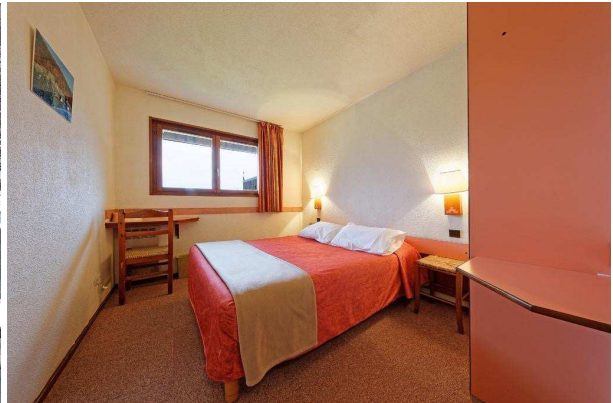
A hearty breakfast and then we will reach the small village of Chapelle des Bois at the foot of the "Mont Noir" by minibus. The Nordic site of Chapelle des Bois located at 1085 meters of altitude is known for its dynamism and its network of well-maintained slopes in both classic and skating styles either in the direction of Bellefontaine passing by the Lac des Mortes or on the side of the Pré Poncet or in the direction of Foncine-le-Haut. Several alternatives to choose from for this day with a lunch break along the way depending on the group (Pré d'Haut or Chez Valentin refuges). Return at the end of the afternoon to your accommodation for the traditional sauna with swimming pool. Last festive meal together.

Saturday: Breakfast and then individual return trip.

Important: The order of the days is purely indicative, the program can be carried out in a different order and some adaptations are possible depending on the weather for example.

Your accommodation: Hotel Club du Risoux Bois d'Amont

In the heart of the Jura Mountains, the Hotel Club du Risoux harmoniously combines authenticity and the warm atmosphere of a real chalet. The atmosphere, the catering, the welcome, the comfort are placed under the sign of conviviality and good mood. The 55 rooms are all comfortable with either 2 beds or 1 double bed of your choice as well as a private bathroom. The restaurant for meals is on the ground floor next to the lounge bar with fireplace. The heated swimming pool, hammam and sauna for recovery as well as the fitness room and ski waxing room as well as Wifi throughout the establishment is available to guests free of charge. Equipment hire (skis, snowshoes) is available on site.



Date: 29.01.-06.02.2022

Services included, individual travel:

- ✓ 7 nights in the hotel "Club du Risoux" in Bois d'Amont (with heated swimming pool and sauna)
- ✓ 7 breakfast buffets
- ✓ 7 evening meals
- ✓ Tourist taxes included
- ✓ Cross-country skiing pass for the whole week
- ✓ Free parking space in front of the hotel
- ✓ All bus transfers
- ✓ Sandoz Concept team guide for the entire duration of the stay

Price per person in a double room and the above services: Euro 1190,-/CHF 1330,-
Price per person in single room and the above services: Euro 1440,-/CHF 1620,-

Additional services (not included in the price - offer on request)

Rental of equipment (ski, poles, classic or skating boots)

Transfer from/to the railway station of La Cure or Le Brassus at the beginning and end of your week



General Information:

Type of Trip:

Guided tour by Team Sandoz Concept

Length:

8 days / 7 nights

Level of Skiing:

The Jura region is known to be accessible to all level especially in classic ski style. Nevertheless, you should be, at a minimum, an advanced Nordic skier and capable of doing at least 30 km with 600 to 800 meters elevation per day and 7 days in a row. You can also do this skate skiing.

Accommodation:

Hôtel Club du Risoux in Bois d'Amont (France) with swimming pool and sauna

Total Distance Covered in One Week:

From 150 to 220 km (depending on the choice of routes). You will have the possibility to choose different alternatives, according to your shape of the day, the guide will orientate you before each departure.

Access by train:

Train to La Cure or Le Brassus train station at the Swiss border: Shuttle bus on request at extra charge.

Car access:

From Paris: Paris-Poligny by the A 39 then Champagnole, Morez, Les Rousses, Bois D'Amont
From Switzerland: Motorway to Nyon, then direction St-Cergue, la Cure, Bois D'amont

Access by plane: The nearest airport is Geneva, then either car rental or train directly from the airport

Parking:

Parking in front of the hotel is free of charge.

Equipment rental:

Possibility to rent equipment (classic and skating) in the hotel on request.

